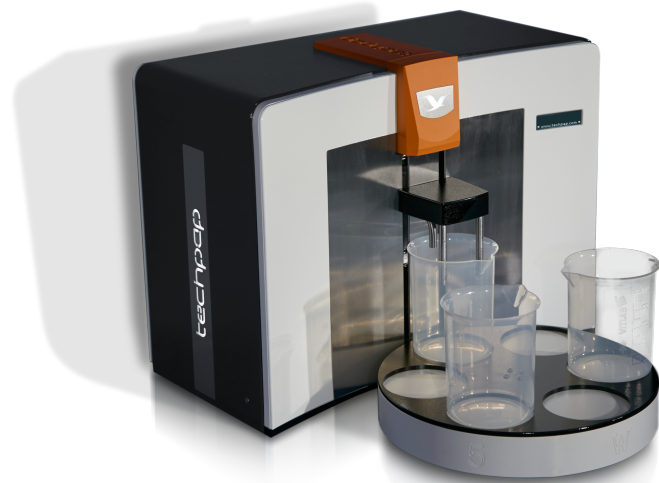


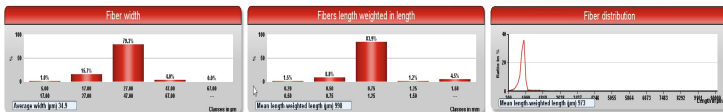
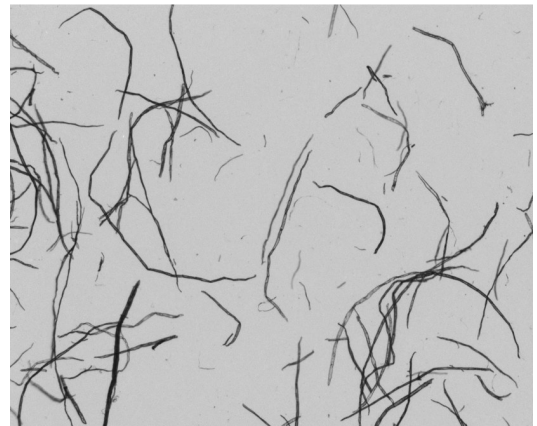
FEATURING
AUTOMATIC SAMPLE DILUTION
CONSISTENCY RECALCULATION
OPTION FOR WALL THICKNESS MEASUREMENT

MORFI NEO

INNOVATION FOR PAPER
A POWERFUL, AND EFFICIENT SOLUTION FOR FIBER MORPHOLOGY MEASUREMENTS



MorFi Neo is a brand new edition of MorFi Compact. Equipped with the latest camera technology, and utilizing an enhanced resolution for the best image treatment. It is designed for day to day production control, routine laboratory tests, and also for R&D purposes. With the new resolution, we are able to measure the Microfibrillation more precisely. MorFi Neo can be also a good tool to monitor first steps of the nano fibers production during refining. The interface gives a complete display of the treated data and makes it possible to recalculate this data to highlight different features. The data can be saved and exported to other computer programs.



MorFi Neo Offers Complete Fiber & Shive Morphology Characterization

FIBERS

- » Average & Distribution for Real Length Measurements
- » Weighted Length Measurements
- » Width Measurements
- » Kinked and Curled Fibers
- » Fiber Broken Ends
- » Microfibrills %

FINE ELEMENTS

- Average & Distribution for :
- » % in Area
 - » % in Length
 - » Number per gram

SHIVES & VESSELS

- Average & Distribution :
- » Length / Width / Area
 - » % area / fibers
 - » Number per gram

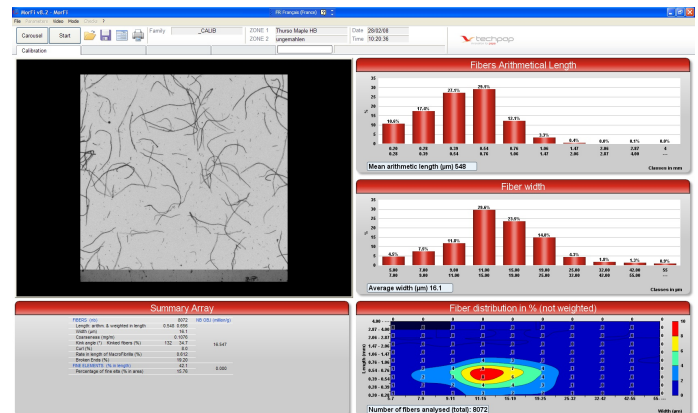
ISO/FDIS 16065-2

User Friendly Software

- » All parameters adjustable including fibers & fines definitions
- » Instant data recalculation using new parameter values (no time limit on data history)
- » Real time fiber images displayed on screen as well as data acquisition
- » Full data exportation & multi test exportation for easy result analysis under Excel
- » Easy to understand histograms, arrays and curves
- » Images saving ability
- » Three passwords protect user authorization levels

Portable

- » 110V or 220V power connection
- » System does not require water or air connection unless automatic dilution is used : water inlet and outlet will be connected.
- » Light weight with aluminium case
- » Operates with a laptop computer



TECHPAP SAS

CS 90251 - 38044 Grenoble cedex 9

Tél. +33 (0)4 76 51 74 75 - Fax +33 (0)4 76 42 05 04

www.techpap.com - techinfo@techpap.com